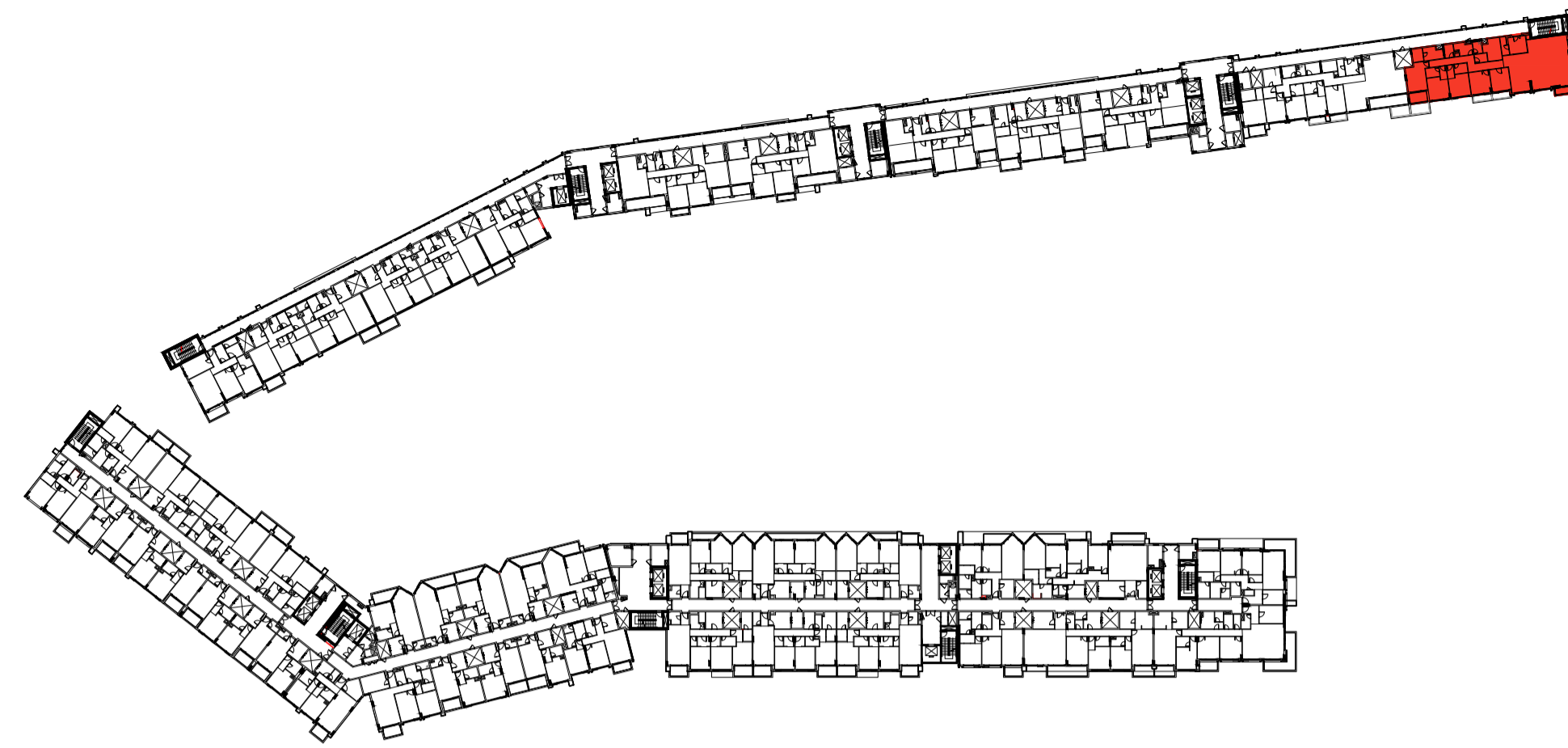
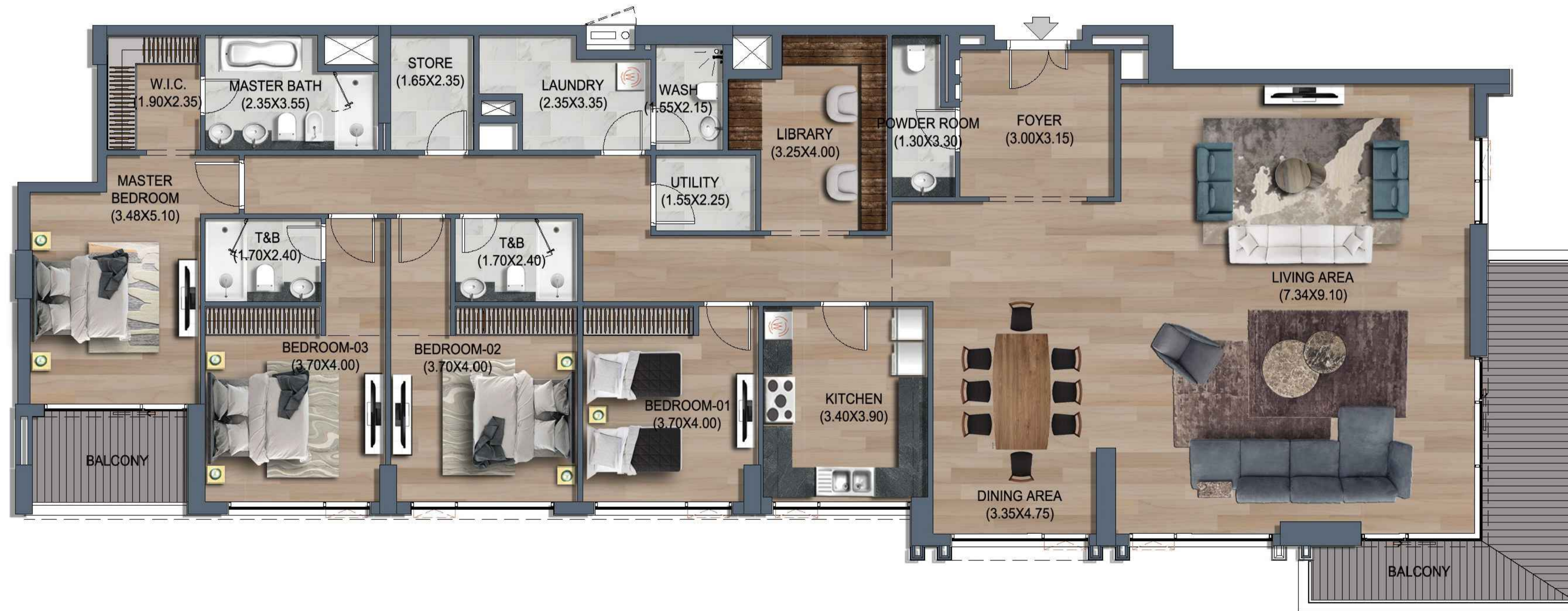


4 BEDROOM - TYPE A (R4-A)



NINTH FLOOR
FLAT NO. : 901



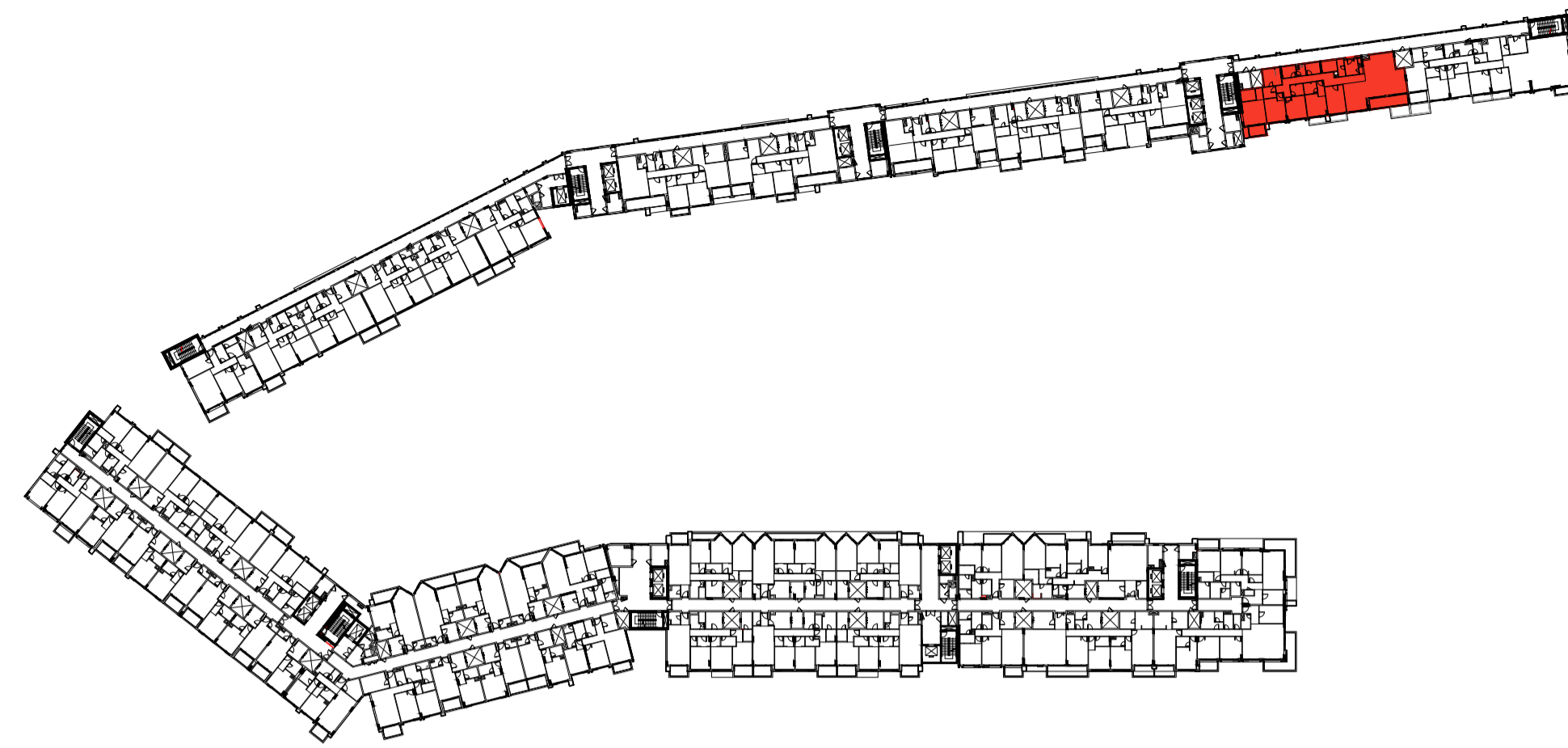
FLAT TYPE	= 4 BEDROOM - TYPE A (R4-A)
NO. OF UNITS	= 1
FLAT AREA (W/O BALCONY)	= 285.83 SQ.M. / 3,077.00 SQ.FT.
BALCONY AREA	= 26.99 SQ.M. / 291.00 SQ.FT.
TOTAL NET AREA =	= 312.82 SQ.M. / 3,367.00 SQ.FT.

SEPTEMBER - 2022

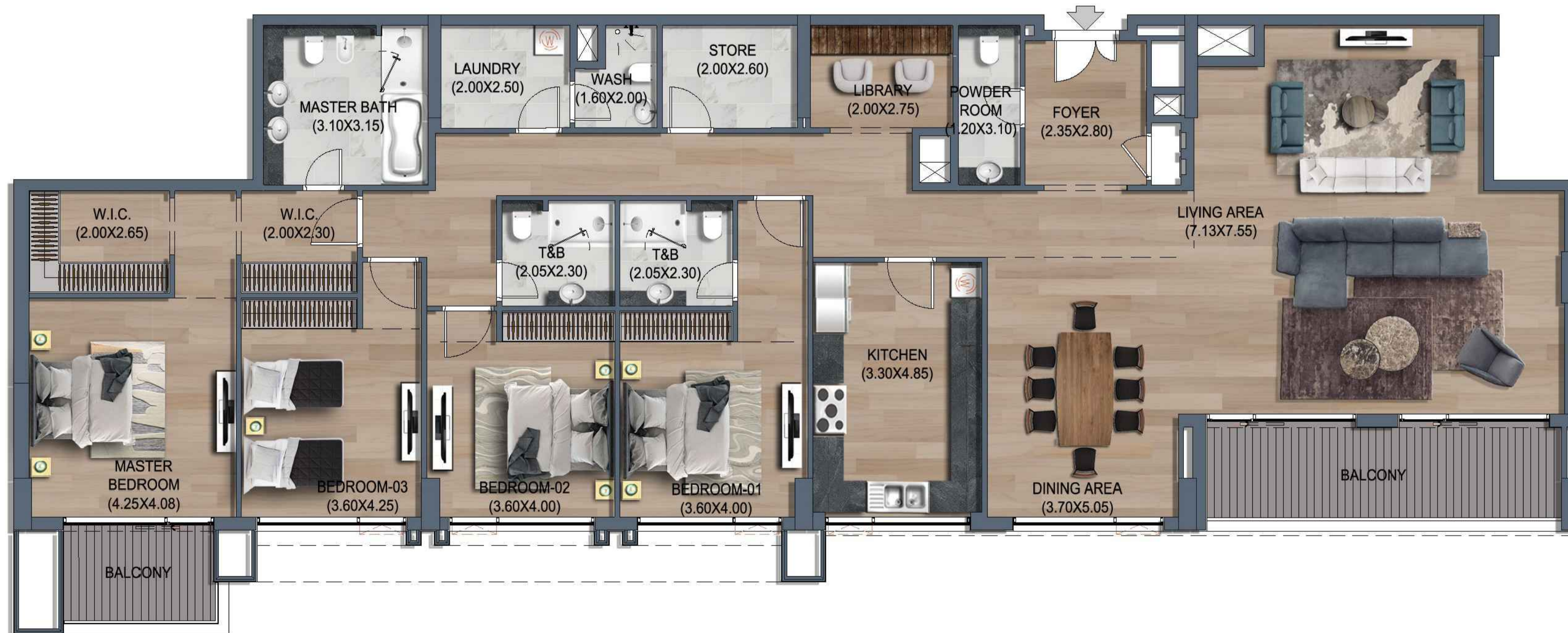
PROPOSED MIXED-USE BUILDING

B+G (COMMERCIAL/ PARKING) + 1ST PODIUM (RESIDENTIAL/ PARKING) + 2ND PODIUM (RESIDENTIAL/ PARKING/ SERVICES)
+ 8 TYPICAL RESIDENTIAL FLOORS + PENTHOUSE RESIDENTIAL FLOOR
ON PLOT NO. 108/A AT AL MEDIFI AREA, KHORFAKKAN, SHARJAH FOR M/S SHARJAH ISLAMIC BANK

4 BEDROOM - TYPE B (R4-B)



NINTH FLOOR
FLAT NO. : 902



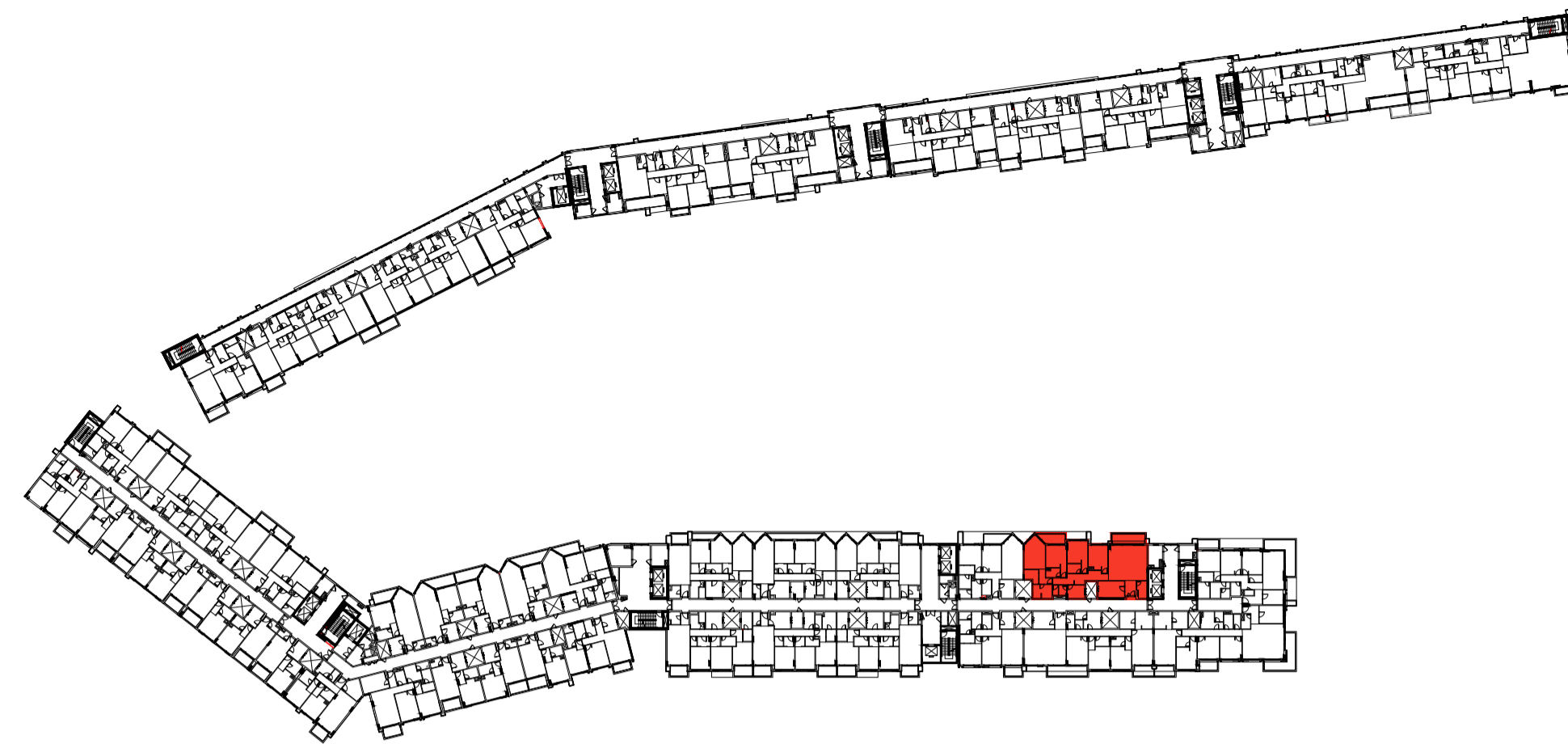
FLAT TYPE	= 4 BEDROOM - TYPE B (R4-B)
NO. OF UNITS	= 1
FLAT AREA (W/O BALCONY)	= 267.58 SQ.M. / 2,880.00 SQ.FT.
BALCONY AREA	= 22.54 SQ.M. / 243.00 SQ.FT.
TOTAL NET AREA =	= 290.12 SQ.M. / 3,123.00 SQ.FT.

SEPTEMBER - 2022

PROPOSED MIXED-USE BUILDING

B+G (COMMERCIAL/ PARKING) + 1ST PODIUM (RESIDENTIAL/ PARKING) + 2ND PODIUM (RESIDENTIAL/ PARKING/ SERVICES)
+ 8 TYPICAL RESIDENTIAL FLOORS + PENTHOUSE RESIDENTIAL FLOOR
ON PLOT NO. 108/A AT AL MEDIFI AREA, KHORFAKKAN, SHARJAH FOR M/S SHARJAH ISLAMIC BANK

4 BEDROOM - TYPE C (R4-C)



NINTH FLOOR
FLAT NO. : 943



FLAT TYPE	= 4 BEDROOM - TYPE C (R4-C)
NO. OF UNITS	= 1
FLAT AREA (W/O BALCONY)	= 218.22 SQ.M. / 2,349.00 SQ.FT.
BALCONY AREA	= 22.29 SQ.M. / 240.00 SQ.FT.
TOTAL NET AREA =	= 240.51 SQ.M. / 2,589.00 SQ.FT.

SEPTEMBER - 2022

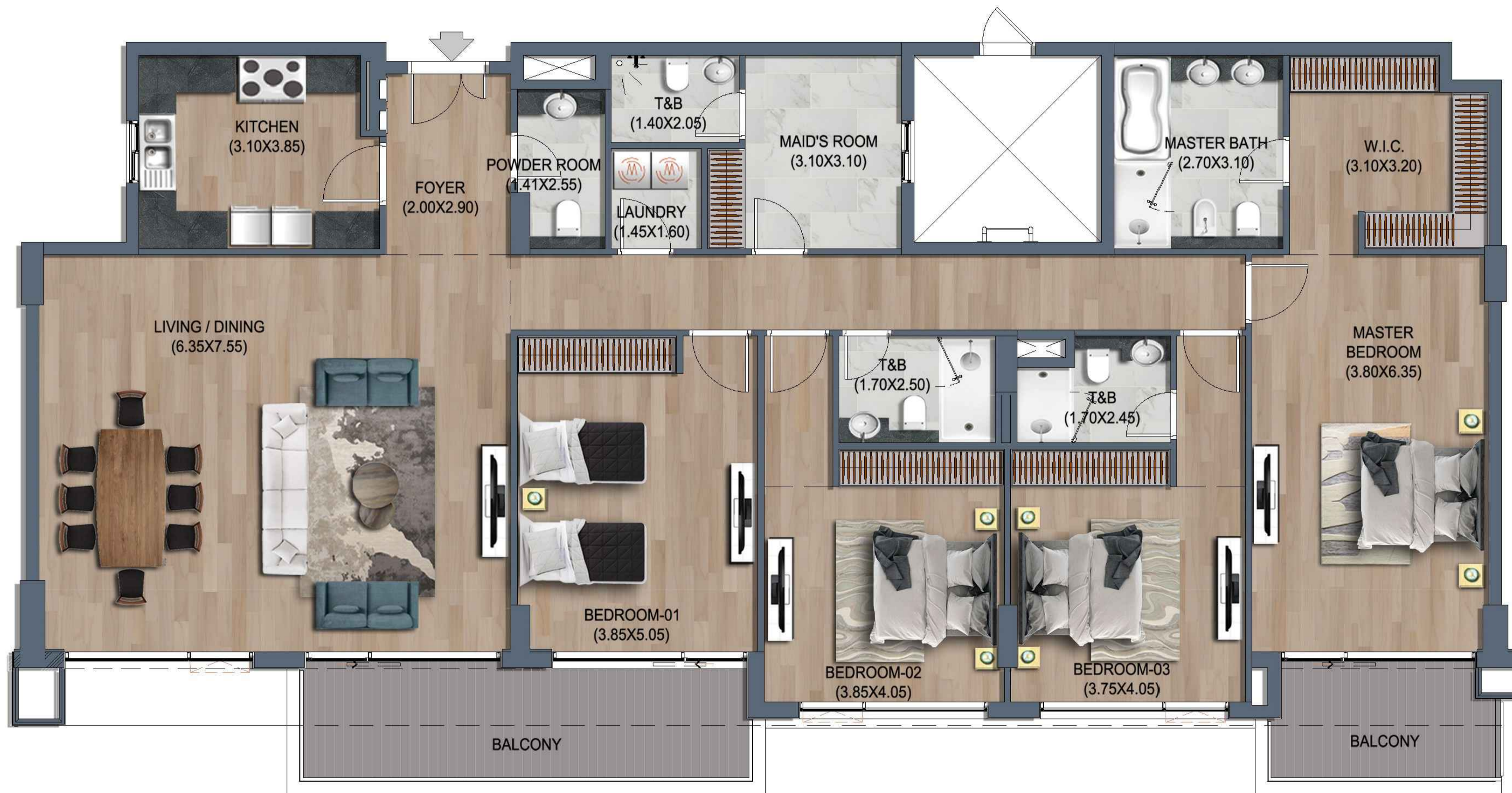
PROPOSED MIXED-USE BUILDING

B+G (COMMERCIAL/ PARKING) + 1ST PODIUM (RESIDENTIAL/ PARKING) + 2ND PODIUM (RESIDENTIAL/ PARKING/ SERVICES)
+ 8 TYPICAL RESIDENTIAL FLOORS + PENTHOUSE RESIDENTIAL FLOOR
ON PLOT NO. 108/A AT AL MEDIFI AREA, KHORFAKKAN, SHARJAH FOR M/S SHARJAH ISLAMIC BANK

4 BEDROOM - TYPE D (R4-D)



NINTH FLOOR
FLAT NO. : 946



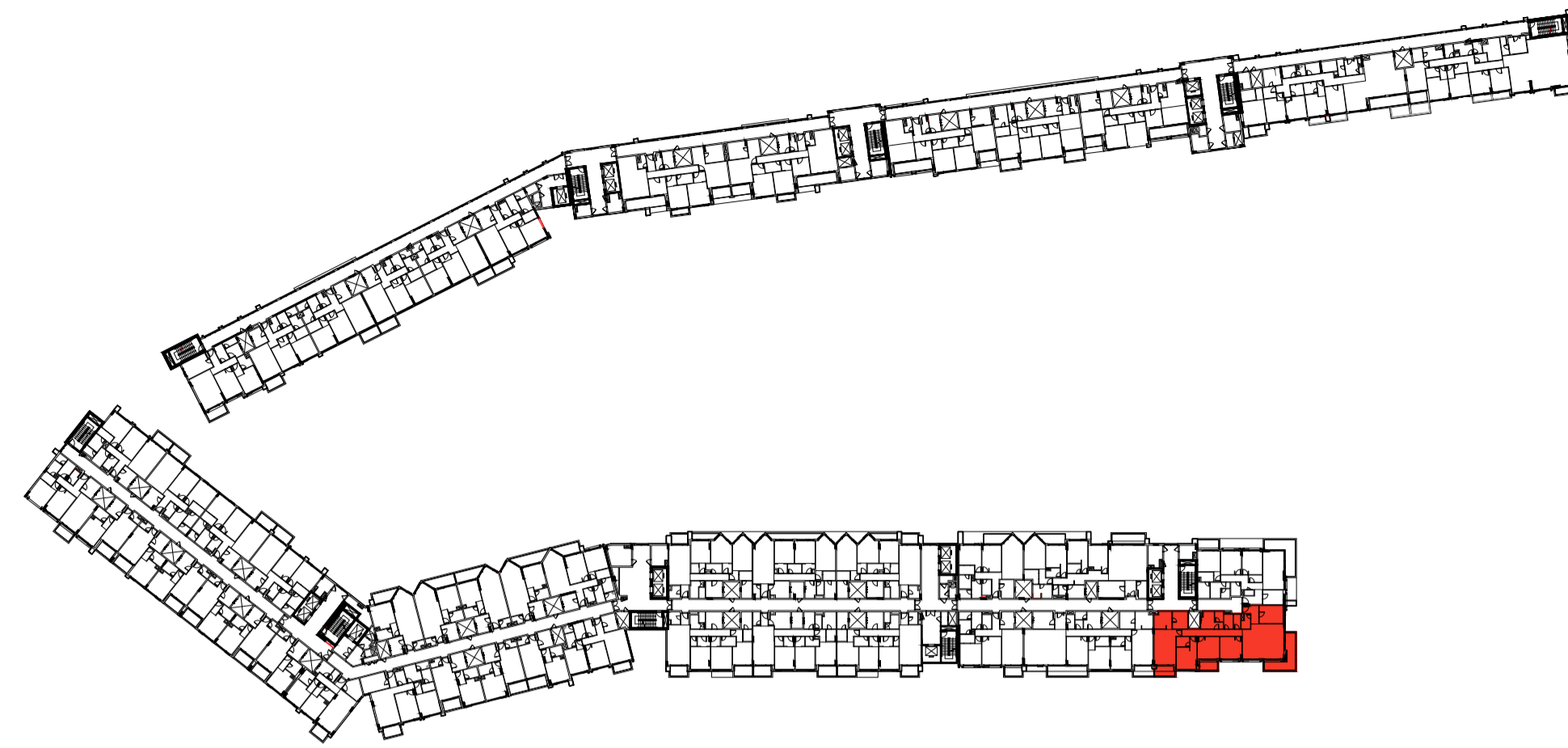
FLAT TYPE	= 4 BEDROOM - TYPE D (R4-D)
NO. OF UNITS	= 1
FLAT AREA (W/O BALCONY)	= 225.23 SQ.M. / 2,424.00 SQ.FT.
BALCONY AREA	= 22.68 SQ.M. / 244.00 SQ.FT.
TOTAL NET AREA =	= 247.91 SQ.M. / 2,669.00 SQ.FT.

SEPTEMBER - 2022

PROPOSED MIXED-USE BUILDING

B+G (COMMERCIAL/ PARKING) + 1ST PODIUM (RESIDENTIAL/ PARKING) + 2ND PODIUM (RESIDENTIAL/ PARKING/ SERVICES)
+ 8 TYPICAL RESIDENTIAL FLOORS + PENTHOUSE RESIDENTIAL FLOOR
ON PLOT NO. 108/A AT AL MEDIFI AREA, KHORFAKKAN, SHARJAH FOR M/S SHARJAH ISLAMIC BANK

4 BEDROOM - TYPE E (R4-E)



NINTH FLOOR
FLAT NO. : 947



FLAT TYPE	= 4 BEDROOM - TYPE E (R4-E)
NO. OF UNITS	= 1
FLAT AREA (W/O BALCONY)	= 223.38 SQ.M. / 2,404.00 SQ.FT.
BALCONY AREA	= 37.38 SQ.M. / 402.00 SQ.FT.
TOTAL NET AREA =	= 260.76 SQ.M. / 2,807.00 SQ.FT.

SEPTEMBER - 2022

PROPOSED MIXED-USE BUILDING

B+G (COMMERCIAL/ PARKING) + 1ST PODIUM (RESIDENTIAL/ PARKING) + 2ND PODIUM (RESIDENTIAL/ PARKING/ SERVICES)
 + 8 TYPICAL RESIDENTIAL FLOORS + PENTHOUSE RESIDENTIAL FLOOR
 ON PLOT NO. 108/A AT AL MEDIFI AREA, KHORFAKKAN, SHARJAH FOR M/S SHARJAH ISLAMIC BANK